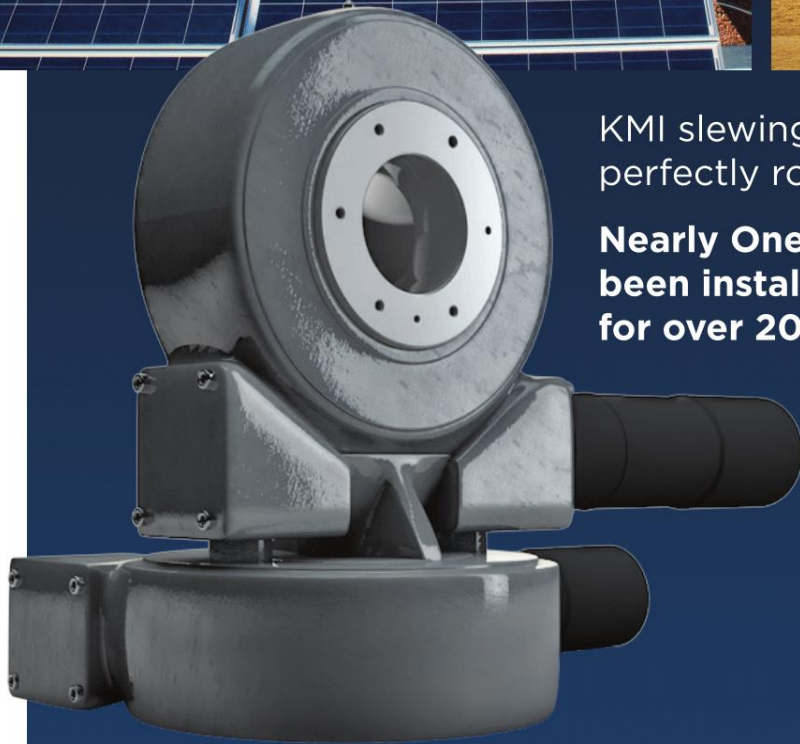




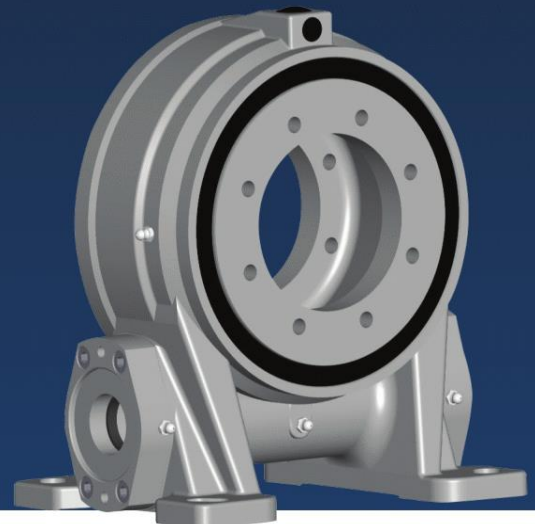
# Kinematics Manufacturing

Kinematics Delivers Innovation



KMI slewing drives easily mount and perfectly rotate any equipment.

**Nearly One Million KMI drives have been installed on OEM machinery for over 20 years.**





# Renewable Energy

KMI slewing drives are the most cost-effective solution on the market for the renewable energy sector. We have designed, tested, and guaranteed our products for accuracy and efficiency for up to 30 years field life. Renewable energy equipment, such as solar trackers and wind turbines, will gain up to 40% more efficiency when using a KMI slewing drive compared to a fixed system.

## Base model performance ratings:

Holding Torque - 2 kNm to 271 kNm

Output Torque - 200 Nm to 94 kNm

Overturning Moment - 300 Nm to 458 kNm

Reduction Ratios - 30:1 to 156,600:1



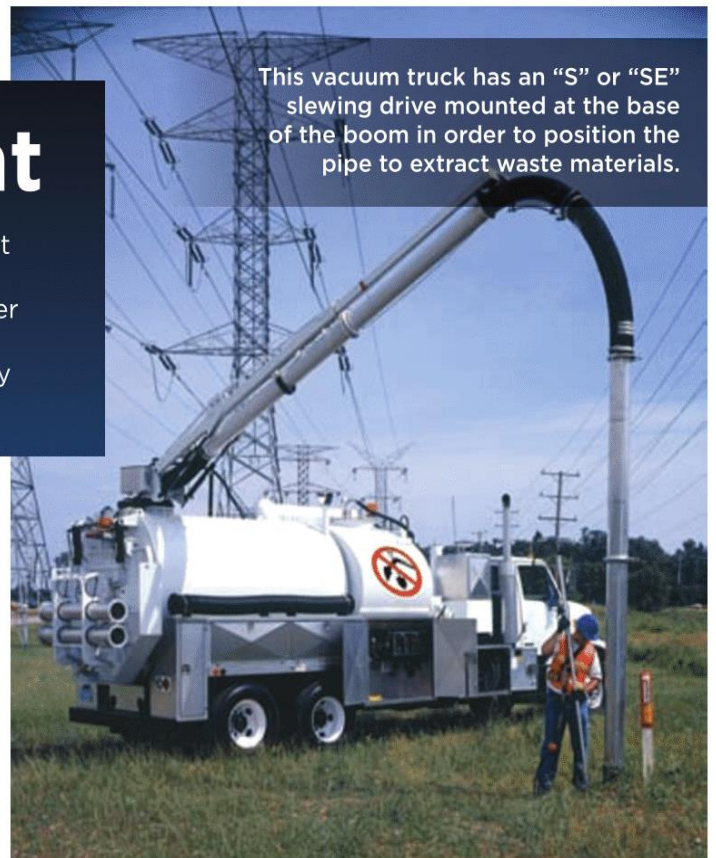
This 50 panel dual axis solar tracker uses the "SE" or "KE" slewing drive on its azimuth axis to follow the sun. The KMI "SDE" slewing drive can also be used for dual axis tracking.



KMI "HE" and "VE" slewing drives are commonly used on single axis solar tracking applications. The ability to drive from both sides and mount directly to the post reduces overall tracker cost without sacrificing torque capabilities.

# Mobile Equipment

Mobile applications require specialized slewing drives that are reliable and fail-safe. Kinematics designs and tests its hourglass slewing drives for smooth, steady rotation under tremendous loads. While powering movement in mobile applications, our slewing drives work safely and efficiently throughout every project.



This vacuum truck has an "S" or "SE" slewing drive mounted at the base of the boom in order to position the pipe to extract waste materials.



The high torque and high tilting moment ratings of KMI "S" and "SE" slewing drives are ideal for the harsh conditions of truck mounted cranes.



## Other mobile equipment:

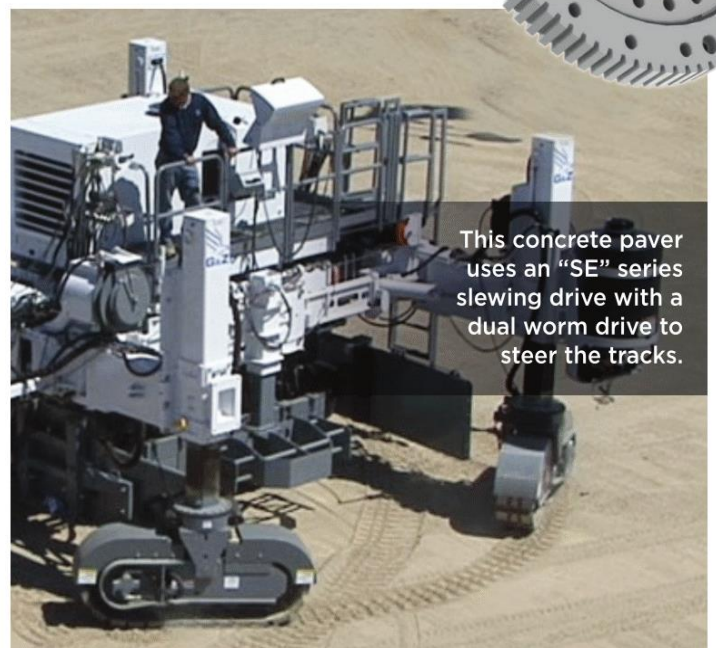
- tire handlers
- conveyor belts
- military trucks and equipment
- grapplers
- turntables
- welding positioners
- and many more!



This telescopic boom lift uses an "S" or "SE" series slewing drive to lift rotate the boom.



The KMI "SE" series slewing drive is used on this excavator's special directional drilling attachment.



This concrete paver uses an "SE" series slewing drive with a dual worm drive to steer the tracks.



# Kinematics Manufacturing

## Kinematics Delivers Innovation



Kinematics Manufacturing began in 1996 as a small operation outside of Los Angeles, CA designing specialty gearboxes and machining, assembling, and shipping them one at a time from a small, 50-square-meter rented space. By listening to our customers' performance problems with existing solutions, KMI was able to offer innovative gearboxes and total process solutions at a low cost.

Currently employing more than 300 dedicated, multinational staff members, Kinematics is the largest slewing drive manufacturer in the world. Kinematics delivers custom-engineered solutions to customers in more than 32 countries from its 14,500-square-meter facility in Jiangsu, China, and distribution warehouses in Europe and the United States.

KMI was founded on the development of innovative engineering and providing total process solutions. This approach has allowed us to obtain more than 45 global patents.

